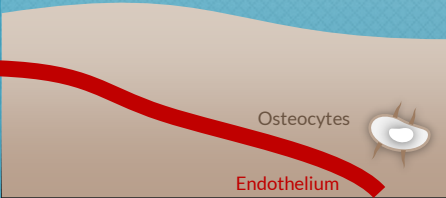


U.S. Patent No. 8,052,987

RESTING PHASE



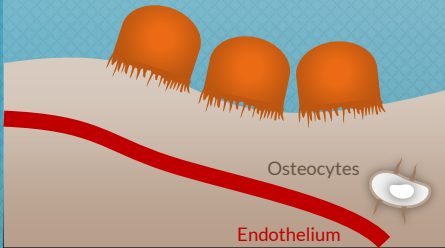
Normal Bone



OSTEOCLASTS:

Resorb bone

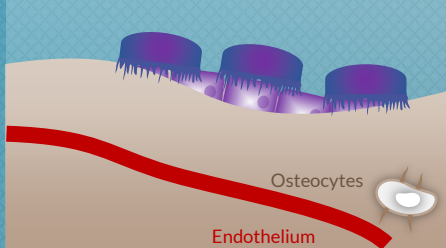
These cells anchor to the surface of bone, creating an acidic microenvironment to dissolve the collagenous bone matrix.



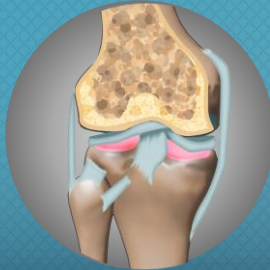
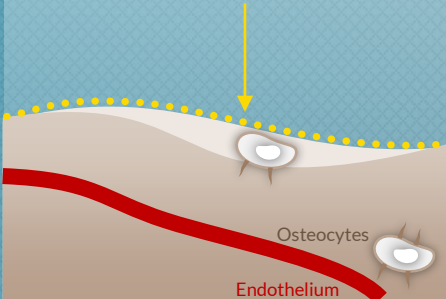
OSTEOBLASTS:

Deposit osteoids

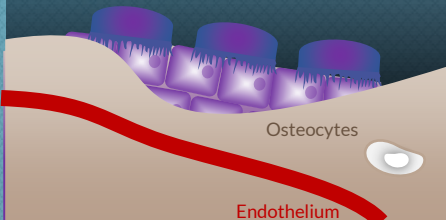
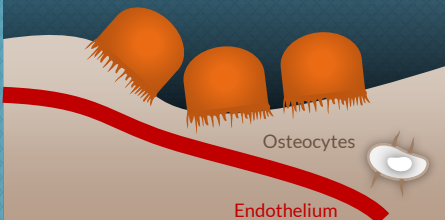
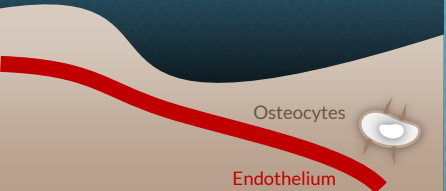
These cells form a matrix where calcium and phosphate crystallize to recreate bone.



NO NET CHANGE
IN BONE MASS



Osteoporotic Bone



NET LOSS IN
BONE MASS

